

# CA SERIES

## MOBILE MIXER/ AMPLIFIERS

TOA CA SERIES MOBILE MIXER/AMPLIFIERS are ideal for remote applications requiring a compact and powerful mixer/amplifier for public address or emergency paging.

Three CA Series models, the CA-115 (15 W), CA-130 (30 W) and CA-160 (60 W) are each powered with a standard 12 Volt DC battery and operate into four or eight ohm speaker loads. All models include two microphone inputs with individual volume controls, a handheld microphone with talk switch, and an auxiliary input for connecting an external CD player, radio, tape deck or tone generator. All mounting hardware is included for easy installation under dashboard or into a standard console cutout.

The CA Series Mobile Mixer/Amplifiers are backed with a two year warranty.



## HIGHLIGHTS

- **Mobile Mixer/Amplifiers for Remote Applications**
- **12 VDC Powered**
- **Easy To Install, Rugged and Reliable**
- **Three Models:**
  - CA-115 (15 W)
  - CA-130 (30 W)
  - CA-160 (60 W)
- **Supports 4 or 8 Ohm Speaker Loads**
- **Two Microphone Inputs** with volume controls.
- **Handheld Microphone Included** - unidirectional, dynamic-type with talk switch, 6' cord and mounting hardware.
- **Auxiliary Input** for connecting an external CD player, radio, tape deck or tone generator.
- **Mounting Hardware Included** - mounts under dashboard or into standard DIN-size console cutout.
- **Two Year Warranty**

## APPLICATIONS

- **Automobiles**
- **Boats**
- **Buses**
- **Construction Vehicles**
- **Emergency Vehicles**
- **Law Enforcement Vehicles**
- **Parade Floats**
- **Theme Park Rides**

# SPECIFICATIONS

CA SERIES MOBILE MIXER/AMPLIFIERS

Tel: 800-733-7088  
 Fax: 800-733-9766  
 www.toaelectronics.com



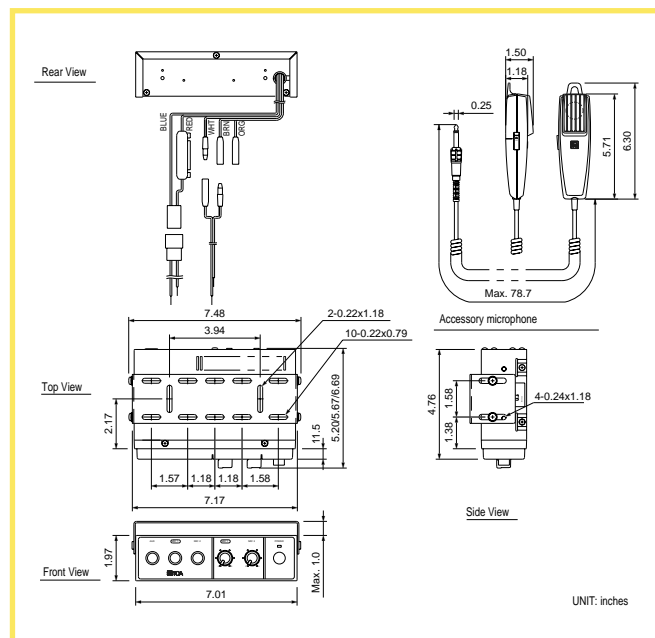
<b>Power Source</b>	10 - 16 VDC
<b>Rated Output</b> (at 4/8 $\Omega$ )	<b>CA-115:</b> 15 W <b>CA-130:</b> 30 W <b>CA-160:</b> 60 W
<b>Current Consumption</b> (at rated output)	<b>CA-115:</b> Less than 3 A <b>CA-130:</b> Less than 5 A <b>CA-160:</b> Less than 9 A
<b>Distortion</b> (1 kHz, rated output)	Less than 5%
<b>Frequency Response</b>	100 Hz - 10 kHz ( $\pm 3$ dB)
<b>Inputs</b>	Mic 1 and Mic 2: 4 mV, 600 $\Omega$ , 1/4" Phone Jack Aux: 500 mV, 10 k $\Omega$ , 1/4" Phone Jack
<b>Microphone</b> (included)	Dynamic, Unidirectional with Talk-Switch, -53 dB (1 kHz, 0 dB = 1 V/Pa), 600 $\Omega$
<b>Finish</b>	Front Panel: ABS Resin, Black Case: Zinc-plated Steel, Black
<b>Dimensions</b> (W x H x D)	<b>CA-115:</b> 7.01" x 1.97" x 5.20" (178 mm x 50 mm x 132 mm) <b>CA-130:</b> 7.01" x 1.97" x 5.67" (178 mm x 50 mm x 144 mm) <b>CA-160:</b> 7.01" x 1.97" x 6.69" (178 mm x 50 mm x 170 mm)
<b>Weight</b> (excluding mounting hardware)	<b>CA-115:</b> 1.98 lbs. (0.9 kg) <b>CA-130:</b> 2.43 lbs. (1.1 kg) <b>CA-160:</b> 2.65 lbs. (1.2 kg)
<b>Accessories</b> (included)	(1) Microphone Holder (1) Mounting Bracket (1) Set, Mounting Screws (1) Fuse (1) Set, Connection Cords

## ARCHITECT'S & ENGINEER'S SPECIFICATIONS

The mobile mixer/amplifier shall be compact and lightweight and designed for use in applications where AC Mains is not available. The power source shall be a 12 VDC battery or suitable DC power supply between the range of 10 to 16 VDC. The rated power amplifier output into a speaker load of four or eight ohms shall be CA-115: 15 W; CA-130: 30 W; CA-160: 60 W. The current consumption at rated output shall be less than CA-115: 3 A; CA-130: 5 A; CA-160: 9 A. The distortion at 1 kHz at rated output shall be less than 5% with frequency response from 100 Hz to 10 kHz ( $\pm 3$  dB). The mixer section shall include two microphone inputs with 600 ohm impedance, 4 mV sensitivity, 1/4" phone jack and individual volume controls as well as an auxiliary line input with 10 kohm impedance, 500 mV sensitivity and 1/4" phone jack. All inputs shall be easily accessible and located on the front panel. A dynamic microphone shall also be included with a unidirectional pickup pattern with talk-switch, 600 ohm impedance and -53 dB sensitivity (1 kHz, 0 dB = 1 V/Pa). Wiring for DC supply and speaker load termination shall be located on the rear panel and shall include an in-line fuse holder. The front panel material and finish shall be black ABS resin and the case shall be black zinc-plated steel. The unit shall include all required mounting hardware including microphone holder, mounting bracket and screws for mounting in a standard DIN-size console cutout or under a dash-board. Dimensions shall be CA-115: 7.01" W x 1.97" H x 5.20" D (178 mm x 50 mm x 132 mm); CA-130: 7.01" x 1.97" x 5.67" (178 mm x 50 mm x 144 mm); CA-160: 7.01" x 1.97" x 6.69" (178 mm x 50 mm x 170 mm). The weight, excluding mounting hardware, shall be CA-115: 1.98 lbs. (0.9 kg); CA-130: 2.43 lbs. (1.1 kg); CA-160: 2.65 lbs. (1.2 kg).

The mobile mixer/amplifier shall be the TOA CA-115, CA-130, CA-160.

## DIMENSIONAL DRAWING



Literature Order #: L-CA  
 Specifications subject to change without notice.  
 © 2001 TOA Electronics, Inc.

### TOA Electronics, Inc.

601 Gateway Boulevard  
 Suite 300  
 South San Francisco, CA 94080

Tel: 800-733-7088 Fax: 800-733-9766

www.toaelectronics.com

### TOA Canada Corp.

Tel: 905-564-3570 Fax: 905-564-3569